

# AQUALIFE 7

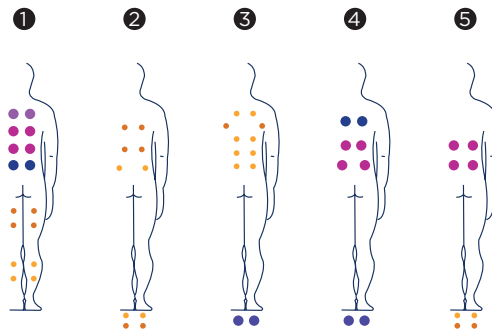


The Aqualife 7 spa has five positions. Provided with two powerful massage pumps, it comes with a fully equipped lounger, in addition to a four massage circuit.

Thanks to the two powerful massage pumps and its 56 jets, the spa becomes the most powerful one in this range.

**Positions:** 5 (4 / 1 )

**Measures:** 216 x 216 x 90



Optional:





ref: 62318

## Technical specifications

Measures ( ±2cm)	216 x 216 x 90
Positions (seats/loungers)	5 (4 / 1)
Water capacity (l)	1.180
Weight (empty / full) (kg)	306 / 1.486

Cabinet coating	Graphite / Thunder Woodermax / Walnut Woodermax
Without cabinet	Optional
Acrylic colours	44 / 27 / 72 / 59 / 18

FEATURES	
Total massage points	<b>56</b>
High pressure micro-massage	18
Circular anti-stress massage	12
Circular drainage massage	12
Reflex foot massage	12
Neck massage	-
Intensive treatment lounger jets	-
Relax Impact System nozzles	-
Waterfall	2
Headrests	3
Digital Control Panel	•
Clean Water System	•
Galvanised metal structure	•
ABS base	•
Energy Saving Cover	•
EcoSpa	Optional
Nordic Insulation System	Optional

FINISHES	
3 LED spotlights	Optional
Bluetooth Sound	Optional
Stainless steel nozzles	•
Programmable WiFi Touch Panel	Optional

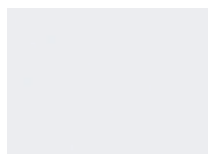
MASSAGE PUMPS	
Water massage	2 x 1.800 W / 2,5 HP
Relax Impact Pump	-

FILTRATION AND HEATING	
Recirculation pump	250 W
Water heater	3.000 W
Type of filter	Cartridge

POWER SUPPLY	
Power requirement LOW AMP (W) / (A) to 230 V	4.000 W / 17,4 A
Voltage	230 V / 400 V III

### Shell finishes

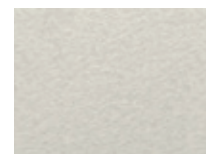
#### Acrylic colors



44 White



27 Winter Solstice



72 Pearl Cameo



59 Sterling



18 Sand

### Furniture finishes



Graphite

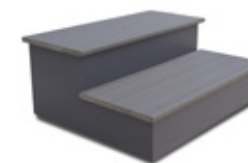


Thunder



Walnut

### Accessories



Woodermax GRAPHITE step  
(or BASIC model)



*Ideal accessory for taking off the spa cover  
without any effort at all.*



Water care

According to our policy of constant evolution, we reserve the right to modify the specifications in part or in whole without forewarning.

# AQUALIFE 7

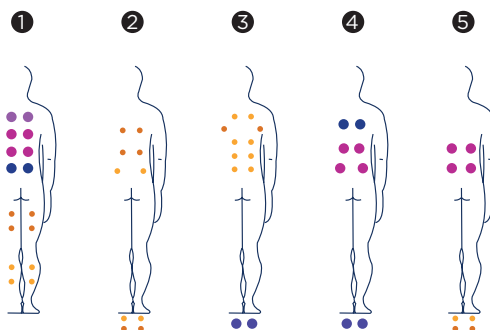


Le Spa Aqualife 7 propose 5 positions différentes. Équipé de deux pompes de massage, il dispose d'une position allongée totalement équipée et offre un circuit de 4 places assises.

Grâce aux deux vigoureux pompes de massage et à ses 56 jets, ce Spa est incontestablement le plus puissant de cette gamme.

**Positions:** 5 (4 / 1 )

**Dimensions:** 216 x 216 x 90



Option:



**Caractéristiques techniques**

ref: 62318

Dimensions ( ±2cm)	216 x 216 x 90
Positions (assises / allongées)	5 (4 / 1)
Volume Eau (l)	1.180
Poids (vide / plein) (kg)	306 / 1.486

Type de Revêtement Meuble Extérieur	Graphite / Chêne blanchi Woodermax / Noyer Woodermax
Sans habillage	Option
Couleurs Acrylique	44 / 27 / 72 / 59 / 18

PRESTATIONS	
Total Points de Massage	<b>56</b>
Micro Massage Localisé Pression	18
Massage Rotatif Anti-tension	12
Massage Rotatif Drainage	12
Massage Pieds Reflexo	12
Massage Cervical	-
Jets Chaise-Longue Intensive Treatment	-
Buses Relax Impact System	-
Cascades Eau	2
Appui-tête	3
Panneau de Commande Numérique	•
Clean Water System	•
Structure Métal Galvanisé	•
Base ABS	•
Energy Saving Cover	•
EcoSpa	Option
Nordic Insulation System	Option

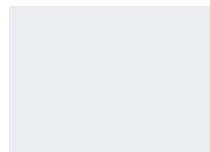
FINITIONS	
3 Ampoules LED	Option
Bluetooth Audio	Option
Buses Inoxydable	•
Touch Panel Programmable Wifi	Option

POMPES DE MASSAGE	
Massage d'Eau	2 x 1.800 W / 2,5 CV
Relax Impact Pump	-

FILTRATION ET CHAUFFAGE	
Pompe de recirculation	250 W
Chauffage d'eau	3.000 W
Type de filtre	Cartouche

COURANT ÉLECTRIQUE	
Puissance maximale LOW AMP (W) / (A) 230 V	4.000 W / 17,4 A
Tension	230 V / 400 V III

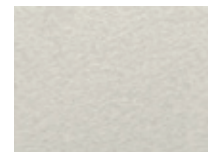
## Matériel des Spas

**Couleurs Acrylique**

44 Blanc



27 Winter Solstice



72 Pearl Cameo



59 Sterling



18 Sand

## Bois des Spas



Graphite

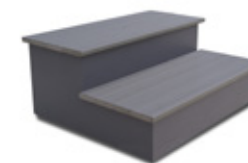


Chêne blanchi



Noyer

## Accessories

*Woodermax GRAPHITE escalier spa  
(ou BASIC modèle)**Accessoire idéal pour ramasser en toute  
commodité la couverture de votre Spa.**Kit de désinfection*

Dans le cadre de notre politique d'améliorations constantes, nous nous réservons le droit de modifier/d'amender nos spécifications n'importe quand et sans aucun préavis.

# AQUALIFE 7

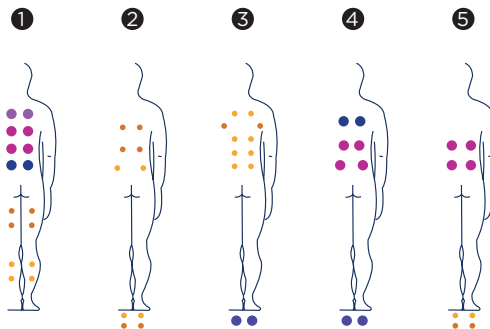


Der Spa Aqualife 7 verfügt über 5 Plätze. Er ist mit zwei leistungsstarken Massagepumpen ausgestattet, verfügt über eine umfassend auserüstete Liege und 4 Sitzen in unterschiedlichen Höhen und Positionen der Rückenlehne.

Dank der zwei leistungsstarken Massagepumpen mit 56 Jets ist dieser Spa der Leistungsstärkste dieser Reihe.

**Positionen:** 5 (4 / 1

**Dimensionen:** 216 x 216 x 90



Option:





ref: 62318

### Ausstattung

Dimensionen ( ±2cm)	216 x 216 x 90
Positionen (Sitze/Liege)	5 (4 / 1)
Wasservolumen (l)	1.180
Gewicht (leer/befüllt) (kg)	306 / 1.486

Verkleidungstyp Außenrahmen	Graphit / Thunder Woodermax / Nussbaum Woodermax
Metallrahmen	Option
Acrylfarben	44 / 27 / 72 / 59 / 18

LEISTUNGEN	
Massagepunkte gesamt	<b>56</b>
Örtliche Druck-Mikromassage	18
Kreisende spannungslösende Massage	12
Kreisende Drainage-Massage	12
Fußreflexmassage	12
Halswirbelmassage	-
Jets Liege intensive Behandlung	-
Düsen Relax Impact System	-
Wasserfälle	2
Kopfstützen	3
Digitales Bedienfeld	•
Clean Water System	•
Verzinkter Metallrahmen	•
ABS-Platte	•
Thermoabdeckung	•
EcoSpa	Option
Nordic Insulation System	Option

AUSFÜHRUNGEN	
3 LED-Strahler	Option
Bluetooth Audio	Option
Düsen Edelstahl	•
Programmierbares Touch Panel Wifi	Option

MASSAGEPUMPEN	
Wassermassage / Jetpumpe	2 x 1.800 W / 2,5 HP
Relax Impact Pump / Gebläse	-

FILTER UND HEIZUNG	
Silent Pump / Umwälzpumpe	250 W
Wassrerhitzer	3.000 W
Filtertyp	Kartuschenfilter

ELEKTRISCHE SPANNUNG	
Leistung Option niedrige Stromstärke (W) / (A) 230 V	4.000 W / 17,4 A
Stromspannung	230 V / 400 V III

### Ausführungstyp Becken

#### Acrylfarben



44 Weiß

27 Winter Solstice

72 Pearl Cameo



59 Sterling

18 Sand

### Verkleidungstyp Außenrahmen

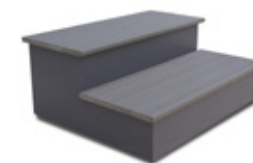


Graphit

Thunder

Nussbaum

### Zubehör



Woodermax GRAPHITE Spa-Leiter  
(oder BASIC modelle)



Ideales Zubehör zum bequemen Abnehmen  
der Spa-Abdeckung



Wasserpflege-Kit

Im Rahmen unserer Bemühungen um ständige Verbesserungen behalten wir uns das Recht vor, ohne weitere Bekanntmachungen Änderungen an der Konstruktion und den technischen Daten vorzunehmen.

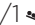
# AQUALIFE 7

AQUAVIA  
SPA



El spa Aqualife 7 dispone de 5 posiciones. Equipado con dos potentes bombas de masaje, dispone de una tumbona totalmente equipada, así como un circuito de 4 asientos.

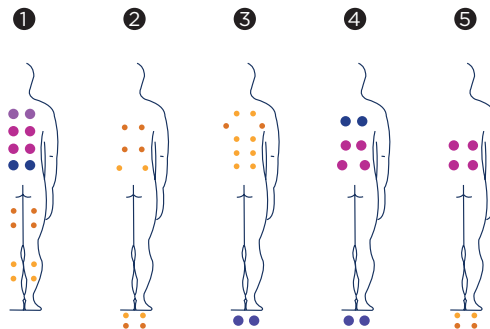
Gracias a las dos potentes bombas de masaje, con sus 56 jets, el spa se convierte en el más potente de esta gama.

**Posiciones:** 5 (4  /1 )

**Medidas:** 216 x 216 x 90



Opcional:



**Características técnicas**

ref: 62318

Medidas ( ±2cm)	216 x 216 x 90
Posiciones (sentado / tumbado)	5 (4 / 1)
Volumen Agua (l)	1.180
Peso (vacío / lleno) (kg)	306 / 1.486

Tipo Revestimiento Mueble Exterior	Grafito / Thunder Woodermax / Nogal Woodermax
Sin revestimiento	Opcional
Colores Acrílico	44 / 27 / 72 / 59 / 18

PRESTACIONES	
Total Puntos de Masaje	<b>56</b>
Micro Masaje Localizado Presión	18
Masaje Rotativo Antitensión	12
Masaje Rotativo Drenaje	12
Masaje Pies Reflexo	12
Masaje Cervical	-
Jets Tumbona Intensive Treatment	-
Boquillas Relax Impact System	-
Cascadas Agua	2
Reposacabezas	3
Panel de Control Digital	•
Clean Water System	•
Estructura Metálica Galvanizada	•
Base ABS	•
Energy Saving Cover	•
EcoSpa	Opcional
Nordic Insulation System	Opcional

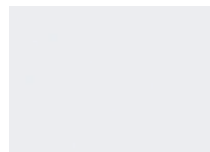
ACABADOS	
3 Focos LED	Opcional
Bluetooth Audio	Opcional
Boquillas Inoxidable	•
Touch Panel Programable Wifi	Opcional

BOMBAS DE MASAJE	
Masaje de agua	2 x 1.800 W / 2,5 CV
Relax Impact Pump	-

FILTRACIÓN Y CALEFACCIÓN	
Bomba de recirculación	250 W
Calentador de agua	3.000 W
Tipo de filtro	Cartucho

CORRIENTE ELÉCTRICA	
Potencia requerida LOW AMP (W) / (A) a 230 V	4.000 W / 17,4 A
Voltaje	230 V / 400 V III

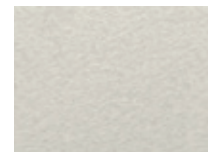
## Acabados Casco

**Colores Acrílico**

44 Blanco



27 Winter Solstice



72 Perla Cameo



59 Sterling



18 Sand

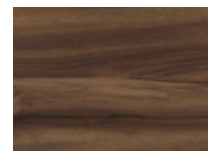
## Acabados Mueble



Grafito

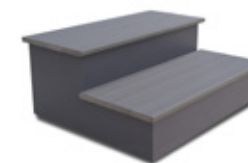


Thunder



Nogal

## Accesorios

*Escalera Woodermax GRAFITO  
(o modelo BASIC)**Accesorio ideal para recoger de  
forma cómoda la cubierta del spa**Kit de desinfección*

Como parte de nuestra política de mejoramiento continuo, nos reservamos el derecho de modificar el diseño y/o especificaciones sin previo aviso.



# AQUALIFE 7

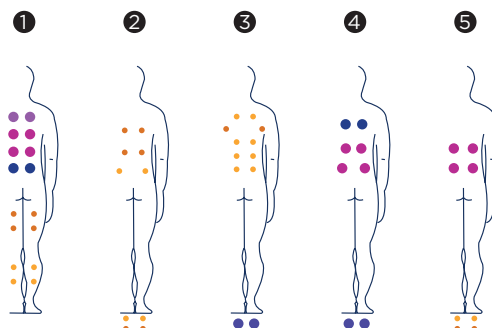


La spa Aqualife 7 dispone di 5 posizioni. Equipaggiata con due potenti pompe di massaggio, dispone di un lettino totalmente equipaggiato e di un circuito con 4 sedili.

Grazie alle due potenti pompe di massaggio, con i 56 jet, è la spa più potente di questa gamma.

**Posizioni:** 5 (4 / 1 )

**Misure:** 216 x 216 x 90



Optional:





ref: 62318

## Caratteristiche

Misure ( ±2 cm)	216 x 216 x 90
Posizioni (seduto / sdraiato)	5 (4 / 1)
Volume acqua (l)	1.180
Peso (vuota/piena) (kg)	306 / 1.486

Tipo di rivestimento del mobile esterno	Grafite / Thunder Woodermax / Nogal Woodermax
Senza rivestimento	Opzionale
Colori Acrilico	44 / 27 / 72 / 59 / 18

PRESTAZIONI	
Totale punti di massaggio	<b>56</b>
Micro massaggio localizzato a pressione	18
Massaggio rotativo antitensione	12
Massaggio rotativo drenante	12
Massaggio ai piedi Reflexo	12
Massaggio cervicale	-
Jet lettino Intensive Treatment	-
Bocchette Relax Impact System	-
Cascate d'acqua	2
Poggiatesta	3
Pannello di controllo digitale	•
Clean Water System	•
Struttura metallica galvanizzata	•
Base ABS	•
Energy Saving Cover	•
EcoSpa	Opzionale
Nordic Insulation System	Opzionale

FINITURE	
3 luci LED	Opzionale
Bluetooth Audio	Opzionale
Bocchette Inossidabile	•
Touch Panel Programmabile Wi-Fi	Opzionale

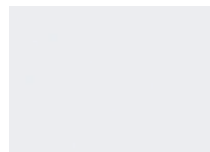
POMPE DI MASSAGGIO	
Massaggio ad acqua	2 x 1.800 W / 2,5 CV
Relax Impact Pump	-

FILTRAGGIO E RISCALDAMENTO	
Pompa di ricircolo	250 W
Scaldaacqua	3.000 W
Tipo di filtro	Cartuccia

CORRENTE ELETTRICA	
Potenza necessaria LOW AMP (W) / (A) a 230 V	4.000 W / 17,4 A
Tensione	230 V / 400 V III

### Materiale Vasca

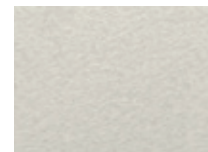
### Colori superficie acrilica



44 Bianco



27 Winter Solstice



72 Perla Cameo



59 Sterling



18 Sand

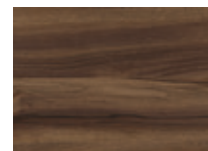
### Mobile in sintetico



Grafite

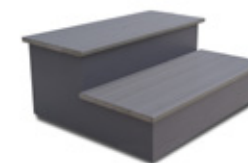


Thunder



Noce

### Accessori



*Escaletta Woodermax GRAFITE  
(o BASIC)*



*Copertura con supporto metallico*



*Kit di disinfezione*

Fedeli alla nostra politica di continuo miglioramento, ci riserviamo il diritto di modificare il design e/o le specifiche senza preavviso.

# AQUALIFE 7

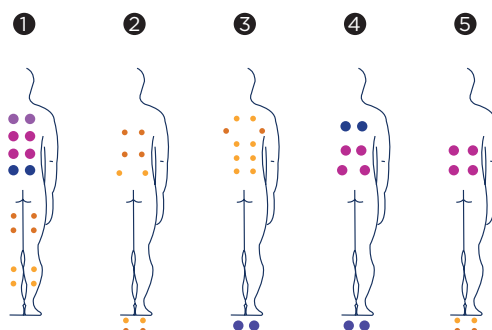


De Aqualife 7-spa heeft vijf posities. Hij heeft twee krachtige massagepompen, een volledig uitgeruste ligplaats en een circuit voor vier massagetypes.

De twee krachtige massagepompen en de 56 jets maken van deze spa de krachtigste in zijn assortiment.

**Posities:** 5 (4 / 1

**Afmetingen:** 216 x 216 x 90



Optioneel:



**Technische eigenschappen**

ref: 62318

Afmetingen (± 2 cm)	216 x 216 x 90
Posities (zit-/ligplaatsen)	5 (4 / 1)
Watervolume (L)	1.180
Gewicht (leeg/vol) (kg)	306 / 1.486

Coating raamwerk	Grafiet / Thunder Woodermax / Walnoot Woodermax
Zonder raamwerk	Optioneel
Acrylkleuren	44 / 27 / 72 / 59 / 18

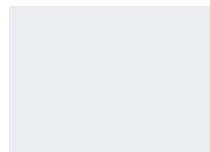
KENMERKEN	
Micromassage met hoge druk	<b>56</b>
Micromassage met hoge druk	18
Cirkelvormige anti-stressmassage	12
Cirkelvormige drainagemassage	12
Voetreflexmassage	12
Nekmassage	-
Ligplaatsjets voor intensieve behandeling	-
Relax Impact System-injectoren	-
Waterval	2
Hoofsteunen	3
Digitaal bedieningspaneel	•
Clean Water-systeem	•
Structuur in gegalvaniseerd metaal	•
Basis in ABS	•
Energy Saving Cover	•
EcoSpa	Optioneel
Nordic Insulation System	Optioneel

AFWERKINGEN	
3 LED-spotlights	Optioneel
Audio Bluetooth	Optioneel
Roestvrijstalen injectoren	•
Programmeerbaar wifi-aanraakscherm	Optioneel

MASSAGEPOMPEN	
Watermassage	2 x 1.800 W / 2,5 PK
Relax Impact-pomp	-

FILTRATIE EN VERWARMING	
Hercirculatiepomp	250 W
Waterboiler	3.000 W
Filtertype	Patroon

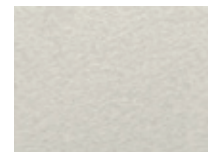
STROOMTOEVOER	
Vereist vermogen LOW AMP (W) / (A) aan 230 V	4.000 W / 17,4 A
Spanning	230 V / 400 V III

**Afwerking****Acrylkleuren**

44 White



27 Winter Solstice



72 Pearl Cameo



59 Sterling



18 Sand

**Coating raamwerk**

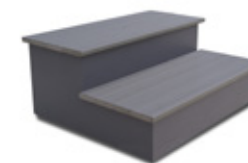
Grafiet



Thunder



Walnoot

**Accessoires***GRAPHITE Spatrapje**Easy-off Spa Cover Lifter**Ideale kit voor het reinigen van uw spawater*

Overeenkomstig ons beleid van voortdurende ontwikkeling behouden wij ons het recht voor om de specificaties geheel of gedeeltelijk te wijzigen zonder voorafgaande kennisgeving.

# AQUALIFE 7

AQUAVIA  
SPA

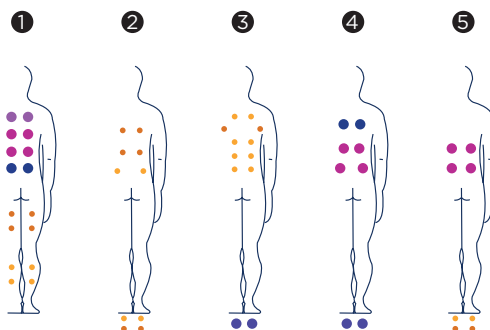


AquaLife 7 má pět pozic. Je vybaven dvěma výkonnými masážními čerpadly, přichází s plně vybaveným lehátkem a čtyřmi masážními obvody.

Díky dvěma silnými masážním čerpadlům a jeho 56 tryskám je nejvýkonnější v této řadě.

**Pozice:** 5 (4  / 1 )

**Rozměry:** 216 x 216 x 90



Volitelné:





ref: 62318

## Technická Specifikace

Rozměry ( ±2cm)	216 x 216 x 90
Pozice (sedačky/lehátka)	5 (4 / 1)
Vodní Kapacita (l)	1.180
Váha (Prázdňá/Plná) (kg)	306 / 1.486

Obložení	Graphite / Thunder Woodermax / Walnut Woodermax
Bez obložení	Volitelné
Barva Akrylu	44 / 27 / 72 / 59 / 18

VÝBAVA	
Celkový Počet Trysek	<b>56</b>
Přímé Trysky	18
Antistresové Rotační	12
Rotační trysky	12
Trysky pro masáž nohou	12
Krční trysky	-
Lehátkové trysky	-
Vzduchové trysky	-
Vodopád	2
Opěrky	3
Digitální Ovládací Panel	•
Ozonátor	•
Pozinkovaná Konstrukce	•
Abs Zpodní Plát	•
Termokryt	•
EcoSpa	Volitelné
Nordic Insulation System	Volitelné

FINISHES	
3 Led Osvětlení	Volitelné
Bluetooth Audio	Volitelné
Nerezové Provedení	•
Wi-Fi Dotykový Panel	Volitelné

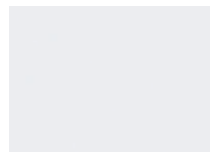
MASÁŽNÍ ČERPADLA	
Vodní Čerpadlo	2 x 1.800 W / 2,5 HP
Vzduchové Čerpadlo	-

FILTRACE A OHŘEV	
Cirkulační Čerpadlo	250 W
Ohřev	3.000 W
Typ Filtru	Cartridge

ELEKTRICKÉ PŘIPOJENÍ	
Příkon Low Amp (W) / (A) To 230 V	4.000 W / 17,4 A
Napájení	230 V / 400 V III

### Provedení Skořepiny

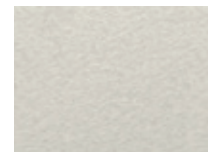
### Barva Akrylu



44 White



27 Winter Solstice



72 Pearl Cameo



59 Sterling



18 Sand

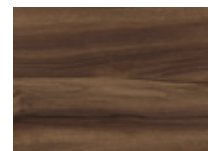
### Obložení



Graphite

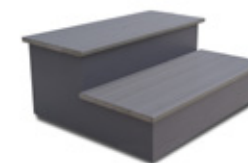


Thunder



Walnut

### Doplňky



*GRAPHITE Schody*



*Usnadní Zvedání A Manipulaci*



*Ideální sada pro údržbu vody ve vířivce*

Overeenkomstig ons beleid van voortdurende ontwikkeling behouden wij ons het recht voor om de specificaties geheel of gedeeltelijk te wijzigen zonder voorafgaande kennisgeving.